



CUSTOM HOUSEBOAT — CUSTOM



Builder: CUSTOM

Year Built: 2017

Model: Houseboat

Price: \$1,400,000 USD

Location: United States

LOA: 80' 0" (24.38m)

Beam: 30' 0" (9.14m)

Min Draft: 1' 6" (0.46m)

Our experienced yacht broker, Andrey Shestakov, will help you choose and buy a yacht that best suits your needs **Custom Houseboat — CUSTOM** from our catalogue. Presently, at Atlantic Yacht and Ship Inc., we have a wide variety of yachts available on our sale's list. We also work in close contact with all the big yacht manufacturers from all over the world.

If you would like to buy a yacht **Custom Houseboat — CUSTOM** or would like help answering any questions concerning purchasing, selling or chartering a yacht, please call **+1 954 274-4435**

TABLE OF CONTENTS

TABLE OF CONTENTS	2
SPECIFICATIONS	3
Basic Information	3
Dimensions	3
Hull and Deck Information	3
Engine Information	3
DETAILED INFORMATION	4
Exclusions	4
Disclaimer	4
PHOTOS	5
June 2007 Progress	5
Line Drawing	5
Barge	5
Bradford Marine	5
Bradford Marine Yacht Sales	5
CONTACTS	6
Contact details	6
Telephones	6
Office hours	6
Address	6

SPECIFICATIONS

Basic Information

Category: Houseboat

Model Year: 2017

Year Built: 2017

Country: United States

Dimensions

LOA: 80' 0" (24.38m)

Beam: 30' 0" (9.14m)

Min Draft: 1' 6" (0.46m)

Hull and Deck Information

Hull Material: Steel

Engine Information

Engines: 2

Manufacturer: Not Applicable

Engine Type: Other

Fuel Type: Other

DETAILED INFORMATION

This HOUSEBOAT on an 80' x 30' steel barge can be built to your specifications. Actual cost depends upon size and buyer's specifications. The barge can be built larger or smaller and priced with or without a building. The wood building, constructed to hurricane codes, can be office space or residential. Built by Bradford Marine and Bradford Marine Bahamas (hull). The barge has a flat deck for ease of constructing many types of commercial or residential structures.

The barge is designed as a permanently-moored vessel and can be held in place by specially-designed means or conventional mooring. With a draft of only 18 inches or less, it can be used in locations too shallow for conventional boats. The size of the barge, custom-built for each project, can be designed for optimum use, limited only by access to the ultimate destination site. FLOATING HOUSEBOATS can be built of all sizes - 80', 60', 40', or ranging from 800 square feet to 4000 square feet. FLOATING HOUSEBOATS can be designed to meet the needs of the customer. This could include construction of the whole FLOATING HOUSEBOATS (barge and superstructure); the barge and the building's shell; or just the barge alone (and the buyer can build his/her own building). Specialized engineering and design services are available.***Barge is built in the Bahamas and thus not eligible for U.S. Coastwise trading privileges***

Exclusions

Owner's personal belongings. Owner's personal toys, including but not limited Jet-skis, Tenders, Sea Bobs, Fishing & Diving equipment.

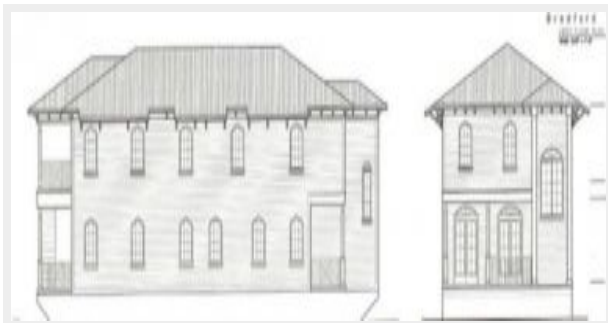
Disclaimer

The Company offers the details of this vessel or yacht in good faith but cannot guarantee or warrant the accuracy of this information nor warrant the condition of the vessel. A buyer should instruct his representatives, agents, or his surveyors, to investigate such details as the buyer desires validated. This vessel or yacht is offered subject to prior sale, price change, or withdrawal without notice.

PHOTOS

June 2007 Progress

Line Drawing



Bradford Marine



Barge



Bradford Marine Yacht Sales



CONTACTS

Andrey Shestakov, leading yacht broker of the sales department of Atlantic Yacht and Ship Inc. Atlantic Yacht and Ship Inc., the official representative of the Miami/Fort Lauderdale FL headquarters.

Contact details

Email: info@atlanticyachtandship.ru

Web: www.atlanticyachtandship.ru/en/

Telephones

USA: +1 954 274-4435

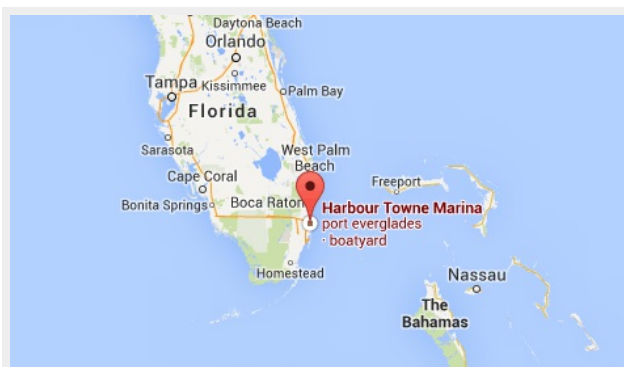
RUS: +7 495 766-6268

Office hours

Monday – Saturday: **9:00 - 21:00** EDT

Sunday: **closed**

Address



Harbour Towne Marina, 850 NE 3rd St,
STE 213, Dania, FL 33004