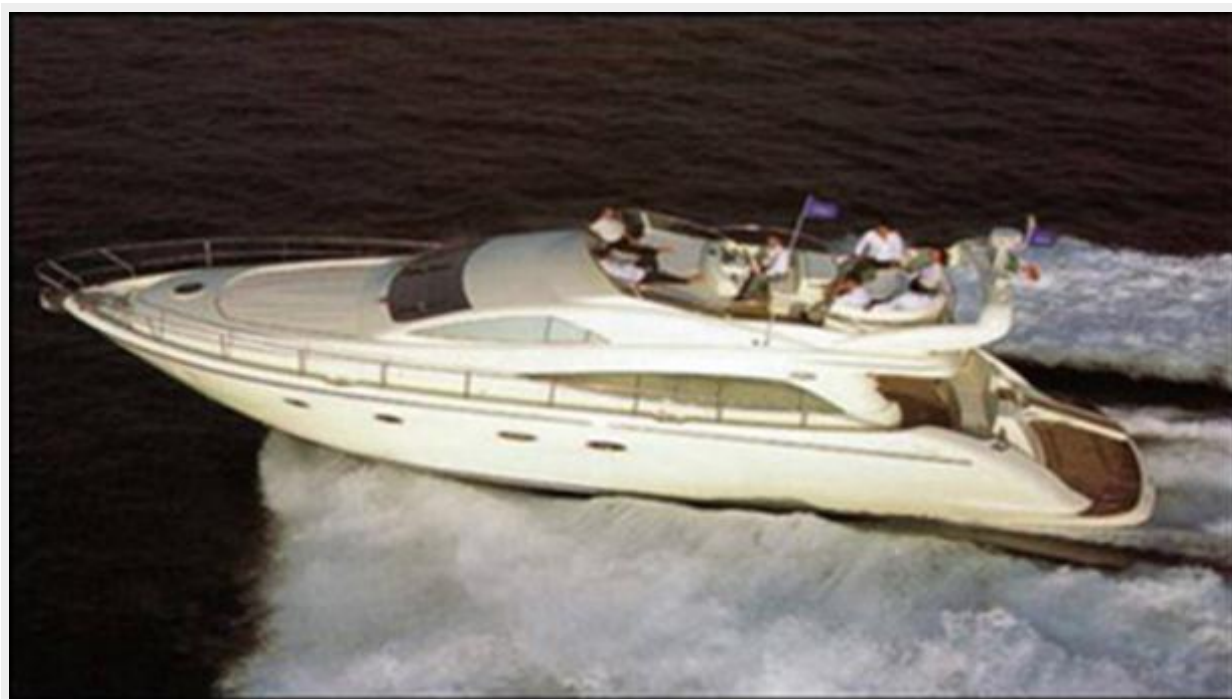




PARTAGAS — AICON YACHTS



Builder: [AICON YACHTS](#)

Year Built: 2004

Model: Motor Yacht

Price: 415 000 € EUR Off the market

LOA: 56' 0" (17.07m)

Beam: 16' 0" (4.88m)

Min Draft: 3' 0" (0.91m)

Max Draft: 4' 0" (1.22m)

Cruise Speed: 28 Kts. (32 MPH)

Max Speed: 32 Kts. (37 MPH)

Our experienced yacht broker, Andrey Shestakov, will help you choose and buy a yacht that best suits your needs **PARTAGAS — AICON YACHTS** from our catalogue. Presently, at Atlantic Yacht and Ship Inc., we have a wide variety of yachts available on our sale's list. We also work in close contact with all the big yacht manufacturers from all over the world.

If you would like to buy a yacht **PARTAGAS — AICON YACHTS** or would like help answering any questions concerning purchasing, selling or chartering a yacht, please call **+1 954 274-4435**

TABLE OF CONTENTS

TABLE OF CONTENTS	2
SPECIFICATIONS	3
Overview	3
Basic Information	3
Dimensions	3
Speed, Capacities and Weight	3
Accommodations	3
Hull and Deck Information	4
Engine Information	4
PHOTOS	5
CONTACTS	7
Contact details	7
Telephones	7
Office hours	7
Address	7

SPECIFICATIONS

Overview

At only a glance, you are immediately aware of the elegance of PARTAGAS perfectly expressed by the following external lines and the luxury of the interior. The harmonious spaces highlight the ease of life aboard on the rich elegant details, all of which have made this a very popular yacht. Partagas is in great conditions, she must be seen.

Basic Information

Category: Motor Yacht

Model Year: 2004

Year Built: 2004

Fly Bridge: Yes

Cockpit: Yes

Dimensions

LOA: 56' 0" (17.07m)

Beam: 16' 0" (4.88m)

Min Draft: 3' 0" (0.91m)

Max Draft: 4' 0" (1.22m)

Speed, Capacities and Weight

Cruise Speed: 28 Kts. (32 MPH)

Cruise Speed Range: 300

Max Speed: 32 Kts. (37 MPH)

Displacement: 66000 Pounds

Water Capacity: 211.3376416 Gallons

Fuel Capacity: 739.6817456 Gallons

Fuel Consumption: 52.8344104 Gallons

Accommodations

Total Cabins: 3

Total Berths: 4

Sleeps: 6

Total Heads: 2

Crew Cabin: 1

Crew Berths: 2

Crew Sleeps: 2

Crew Heads: 1

Hull and Deck Information

Hull Material: GRP

Deck Material: Teak

Hull Configuration: Deep Vee

Hull Color: Cream

Engine Information

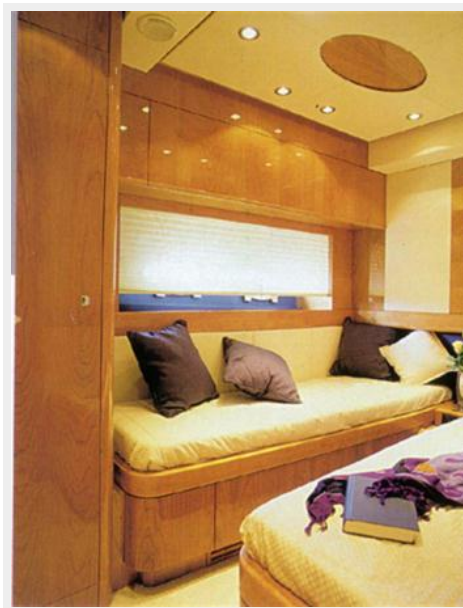
Engines: 2

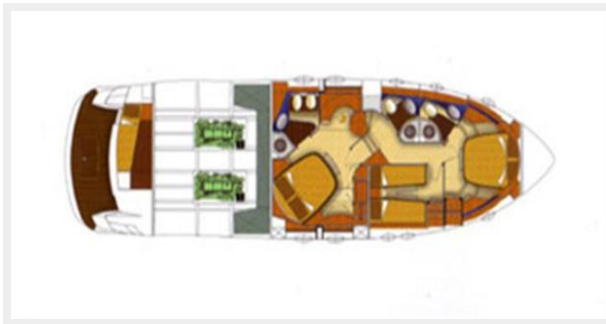
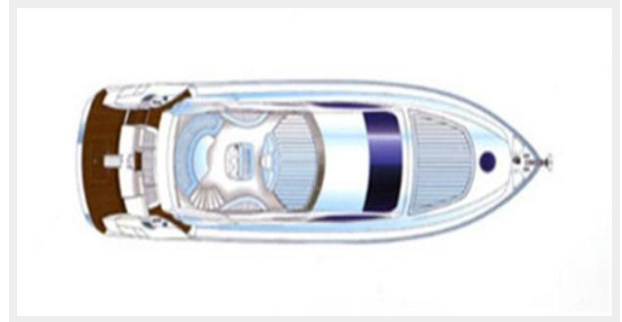
Manufacturer: MAN

Engine Type: Inboard

Fuel Type: Diesel

PHOTOS





CONTACTS

Andrey Shestakov, leading yacht broker of the sales department of Atlantic Yacht and Ship Inc. Atlantic Yacht and Ship Inc., the official representative of the Miami/Fort Lauderdale FL headquarters.

Contact details

Email: info@atlanticyachtandship.ru

Web: www.atlanticyachtandship.ru/en/

Telephones

USA: +1 954 274-4435

RUS: +7 495 766-6268

Office hours

Monday – Saturday: **9:00 - 21:00** EDT

Sunday: **closed**

Address



Harbour Towne Marina, 850 NE 3rd St,
STE 213, Dania, FL 33004