



## MONSOON — CUSTOM



**Builder:** CUSTOM

**Year Built:** 1978

**Model:** Motorsailer

**Price:** ~~\$220,000 USD~~ Off the market

**Location:** Aruba

**LOA:** 72' 3" (22.00m)

**Beam:** 18' 1" (5.50m)

**Max Draft:** 8' 3" (2.50m)

**Cruise Speed:** 8 Kts. (9 MPH)

**Max Speed:** 10 Kts. (12 MPH)

Our experienced yacht broker, Andrey Shestakov, will help you choose and buy a yacht that best suits your needs **Monsoon — CUSTOM** from our catalogue. Presently, at Atlantic Yacht and Ship Inc., we have a wide variety of yachts available on our **sale's list**. We also work in close contact with all the big **yacht manufacturers** from all over the world.

If you would like to buy a yacht **Monsoon — CUSTOM** or would like help answering any questions concerning purchasing, selling or chartering a yacht, please call **+1 954 274-4435**

---

# TABLE OF CONTENTS

---

TABLE OF CONTENTS	2
SPECIFICATIONS	3
Overview	3
Basic Information	3
Dimensions	3
Speed, Capacities and Weight	3
Accommodations	3
Hull and Deck Information	4
Engine Information	4
DETAILED INFORMATION	5
Remarks	5
Electronics and Navigational Equipment	5
Engine /Mechanical Equipment	5
Deck Equipment	5
Galley	6
Safety And Fire Protection	6
Tenders	6
PHOTOS	7
custom motorsailor for sale	7
New teak deck	7
CONTACTS	11
Contact details	11
Telephones	11
Office hours	11
Address	11

---

# SPECIFICATIONS

---

## Overview

---

Special low rate offer.

## Basic Information

---

**Year Built:** 1978

**Category:** Motorsailor

**Model Year:** 1978

**Year Built:** 1978

**Refit Year:** 2007

**Refit Type:** 2007-2009 being overhauled in the Netherlands Antilles. Teak deck, interior,.....

**Country:** Aruba

**Fly Bridge:** No

**Cockpit:** Yes

**Helipad:** No

## Dimensions

---

**LOA:** 72' 3" (22.00m)

**Beam:** 18' 1" (5.50m)

**Max Draft:** 8' 3" (2.50m)

## Speed, Capacities and Weight

---

**Cruise Speed:** 8 Kts. (9 MPH)

**Max Speed:** 10 Kts. (12 MPH)

**Displacement:** 130000 Pounds

**Water Capacity:** 264.172052 Gallons

**Holding Tank:** 79.2516156 Gallons

**Fuel Capacity:** 1849.204364 Gallons

## Accommodations

---

**Total Cabins:** 4

**Total Berths:** 1

**Sleeps:** 10

**Total Heads:** 1

**Captain Cabin:** False

**Crew Cabin:** 1

**Crew Berths:** 1

**Crew Sleeps:** 2

**Crew Heads:** 1

---

## Hull and Deck Information

---

**Hull Material:** Steel

**Deck Material:** Teak

**Hull Color:** White

**Hull Finish:** Other

**Hull Designer:** Don Brooke

---

## Engine Information

---

**Engines:** 1

**Manufacturer:** Detroit Diesel

**Model:** 6-71, 6 cyl.

**Engine Type:** Inboard

**Fuel Type:** Diesel

---

## DETAILED INFORMATION

---

### Remarks

---

This custom steel ketch has been overhauled in 2007 in Curacao. New teak deck. New anchor winch and a lot of improvements. Worth while looking at.

### Electronics and Navigational Equipment

---

Garmin 128 GPS Furuno gps GP 32 - 2005 Handheld Magellan GPS Shipmate 8100 VHF radio, 2x Icom VHF M45 radio - 2004 Navico Axis 200 handheld VHF radio Icom 88 handheld VHF radio - 2004 ICOM 700 SSB radio with antenna tuner Furuno: weatherfax with fax5 2004 coupler Furuno 1833C radar/plotter 2005 Toshiba Satellite to GPS plotting in CMAP. FCV 1000, 3 kW Furuno depth/fishfinder. Simrad Robertson AP50 (2004) autopilot steers the Wagner T10 hydraulic ram. B&G network wind/speed/depth Dannforth: 2x 6 inch compasses Watermaker: Vantage Marine

2 main engine start batteries

2 generator start batteries

2 banks of 24 volt with 1 inverter and 4 chargers

### Engine /Mechanical Equipment

---

Detroit Diesel 6-716 cylinder 180 HP Diesel engine Yanmar - Kohler Generator 16.5 Kw Fuel capacity: 7.000 Ltr. Water capacity: 2 \* 500 Ltr.

### Deck Equipment

---

2 aluminium masts Barlo winches, 35,24,26 Lewmar winch 77 Electric Stainless steel pulpit and guardrail Danfort 100 ft 3/5' CQR 14 450 ft \* 1/2"

Bruce anchor 330 ft \* 1/2" Windlass: Maxwell 3200

---

## Galley

---

Electric 3 plate stove  
Two refrigerators  
cabinets for storage

---

## Safety And Fire Protection

---

6 Bilge pumps  
Several fire extinguisher  
Life jackets: 30  
Lifesling

---

## Tenders

---

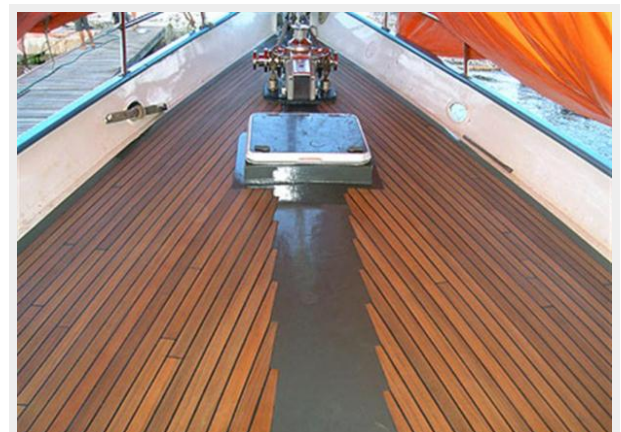
Liferaft: Platimo 12 persons  
Dingy: Caribe with 15 HP Yamaha

# PHOTOS

custom motorsailer for sale



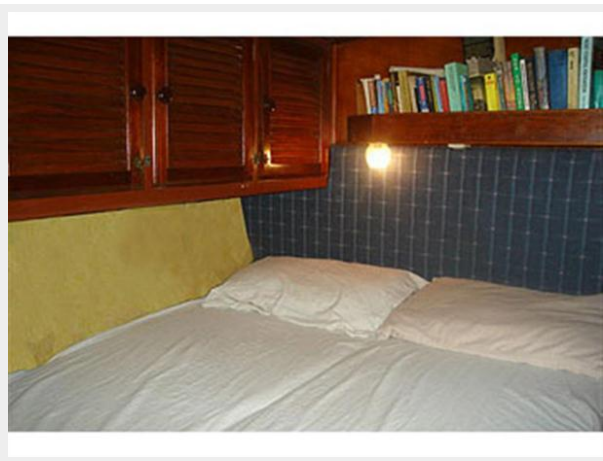
New teak deck













# CONTACTS

---

Andrey Shestakov, leading yacht broker of the sales department of Atlantic Yacht and Ship Inc. Atlantic Yacht and Ship Inc., the official representative of the Miami/Fort Lauderdale FL headquarters.

## Contact details

---

Email: [info@atlanticyachtandship.ru](mailto:info@atlanticyachtandship.ru)

Web: [www.atlanticyachtandship.ru/en/](http://www.atlanticyachtandship.ru/en/)

## Telephones

---

USA: +1 954 274-4435

RUS: +7 495 766-6268

## Office hours

---

Monday – Saturday: **9:00 - 21:00** EDT

Sunday: **closed**

## Address

---



Harbour Towne Marina, 850 NE 3rd St,  
STE 213, Dania, FL 33004