



## 45' MERIDIAN — SABRELINE



**Builder:** SABRELINE

**Year Built:** 1997

**Model:** Cruiser

**Price:** ~~\$349,000 USD~~ Off the market

**Location:** United States

**LOA:** 45' 0" (13.72m)

**Beam:** 15' 0" (4.57m)

**Max Draft:** 4' 0" (1.22m)

**Cruise Speed:** 18 Kts. (21 MPH)

**Max Speed:** 22 Kts. (25 MPH)

Our experienced yacht broker, Andrey Shestakov, will help you choose and buy a yacht that best suits your needs 45' Meridian — SABRELINE from our catalogue. Presently, at Atlantic Yacht and Ship Inc., we have a wide variety of yachts available on our sale's list. We also work in close contact with all the big yacht manufacturers from all over the world.

If you would like to buy a yacht 45' Meridian — SABRELINE or would like help answering any questions concerning purchasing, selling or chartering a yacht, please call +1 954 274-4435

# TABLE OF CONTENTS

TABLE OF CONTENTS	2
SPECIFICATIONS	3
Basic Information	3
Dimensions	3
Speed, Capacities and Weight	3
Accommodations	3
Hull and Deck Information	3
Engine Information	4
DETAILED INFORMATION	5
Accommodations	5
Electronics and Navigational Equipment	5
Electrical System	6
Deck Equipment	6
Engine /Mechanical Equipment	6
Exclusions	7
Disclaimer	7
PHOTOS	8
Master Tub	9
CONTACTS	11
Contact details	11
Telephones	11
Office hours	11
Address	11

---

# SPECIFICATIONS

---

## Basic Information

---

**Category:** Cruiser

**Sub Category:** Cabin Cruiser

**Model Year:** 1997

**Year Built:** 1997

**Country:** United States

**Fly Bridge:** Yes

## Dimensions

---

**LOA:** 45' 0" (13.72m)

**LWL:** 39' 0" (11.89m)

**Beam:** 15' 0" (4.57m)

**Max Draft:** 4' 0" (1.22m)

**MFG Length:** 45' 0" (13.72m)

## Speed, Capacities and Weight

---

**Cruise Speed:** 18 Kts. (21 MPH)

**Max Speed:** 22 Kts. (25 MPH)

**Displacement:** 35500 Pounds

**Water Capacity:** 125 Gallons

**Holding Tank:** 60 Gallons

**Fuel Capacity:** 700 Gallons

## Accommodations

---

**Total Berths:** 3

**Sleeps:** 6

## Hull and Deck Information

---

**Hull Material:** Fiberglass

---

## Engine Information

---

**Engines:** 2

**Manufacturer:** Cummins

**Model:** 6CTA

**Engine Type:** Inboard

**Fuel Type:** Diesel

---

# DETAILED INFORMATION

---

## Accommodations

---

Starting forward, the master stateroom is expansive and beautifully appointed with hardwood planks along side battens, teak and holly sole, king berth with six drawers beneath, hanging lockers and four drawers both to port and starboard. Within the master stateroom, the head and vanity is located to starboard and the bathtub/shower is located to port. Moving aft, up four steps is the salon featuring teak and holly sole and to starboard is the lower helm/steering station with leather covered pedestal helm chair and full set of electronics. Directly to port is a beautifully finished chart cabinet. Aft of the chart cabinet is an "L" shaped leather settee. Starboard of the settee is the beverage locker and additional storage. Aft of the beverage locker is the well-appointed galley featuring Corian countertops, Sharp convection/microwave oven, full-size sink with dishwasher below, two-burner princess stovetop, Elite full-size side by side refrigerator/freezer and icemaker with matching wood paneled doors, and plenty of storage. Moving aft and down four steps the aft stateroom and crew/guest quarters are located to starboard. The crew/guest quarters features an over/under berths, teak and holly sole and flat screen TV. Aft of the crew/guest quarters, the guest stateroom features an "L" shaped settee that converts into a double berth. Drawers are located beneath berth and two hanging lockers are situated to starboard. A unique feature of the Meridian is the retractable wall that separates the aft stateroom and crew/guest quarters. This retractable wall can be opened creating one large stateroom. Both the crew/guest quarters and aft stateroom can be accessed through separate doors when retractable wall is in use. To port of the aft stateroom is the aft head with shower/tub and vanity. Aft of the head is the handy utility center featuring a washer/dryer combo and built-in ironing and drying center. The utility center also has lots of storage. Aft of the utility center is access to aft hatch or lazarette for additional storage. The aft deck can be accessed via four steps to the aft hatch. Climate is controlled via MarineAir systems with controls for salon, forward and aft staterooms.

---

## Electronics and Navigational Equipment

---

Upper and lower Nothstar 951xs  
,Robertson auto pilot also repeater on  
bridge,

- Lower Helm/Steering Station
- Pannish controls
- Westmar bowthruster,T121 E, electric 10 HP
- Newmar 5 station intercom (including engine room)
- Furuno 8 tone daylight display radar
- Northstar 951x GPS
- Cetrek depth, speed, wind
- Simrad Robertson AP300xAutopilot
- Furuno FCV-667 color video sounder Remote for Ideal windlass Remote for Guest spotlight
- Icom IC M126DSC VHF

## Electrical System

---

- Stainless steel water heater Promariner SS-40 40 amp battery charger
- Three battery selector switches Four engine room blowers Fireboy fire suppression system
- 12.5 KW Westerbeke GenSet with sound shield (1547 hours)
- Trace 2512, 3000 Watt converter with Gel Cell Batteries
- 4 8G Gel Cell Batteries
- 100 amp
- 3 for engine
- 1 for Generator

## Deck Equipment

---

Aft deck with freshwater washdown to port and hot/cold shower to starboard. There is a transom walk threu to the transom platform. The lazzaret has access from rear stateroom. Also has two deck hatches to store lots of things.

## Engine /Mechanical Equipment

---

Engine room complete with spare parts for generator, engines and accessories

- Cummins 420 HP Diamond Edition engines
- Reverso oil change system
- Five Racor fuel filters (3) 500's and (2) 1000's
- Reverso fuel transfer pump
- Walker air seps
- Fiberglass fuel tanks
- Center tank with manhole cover
- Two built-in toolboxes
- Stainless steel water heater Promariner SS-40 40 amp battery charger
- Three battery selector switches Four engine room blowers
- 2 Fireboy fire suppression system
- 12.5 Westerbeke Genset with sound shield (1547 hrs)

---

## Exclusions

---

Owner's personal belongings. Owner's personal toys, including but not limited Jet-skis, Tenders, Sea Bobs, Fishing & Diving equipment.

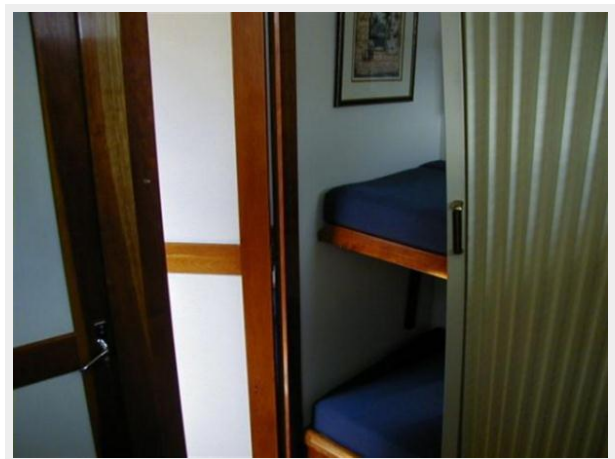
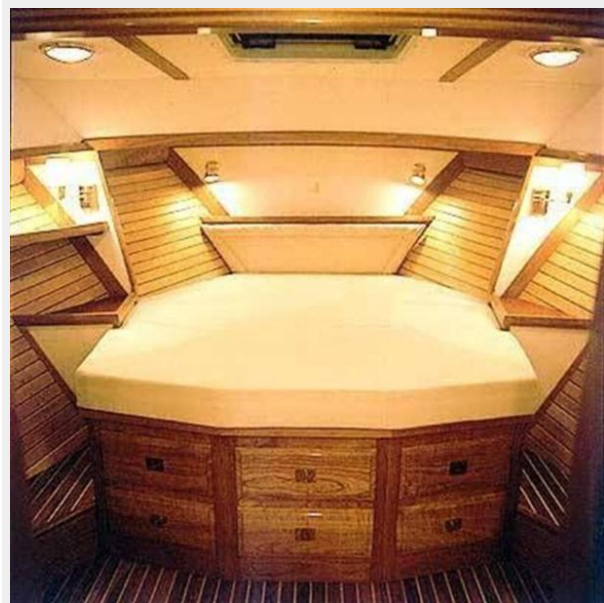
---

## Disclaimer

---

The Company offers the details of this vessel or yacht in good faith but cannot guarantee or warrant the accuracy of this information nor warrant the condition of the vessel. A buyer should instruct his representatives, agents, or his surveyors, to investigate such details as the buyer desires validated. This vessel or yacht is offered subject to prior sale, price change, or withdrawal without notice.

# PHOTOS





### Master Tub





# CONTACTS

---

Andrey Shestakov, leading yacht broker of the sales department of Atlantic Yacht and Ship Inc. Atlantic Yacht and Ship Inc., the official representative of the Miami/Fort Lauderdale FL headquarters.

## Contact details

---

Email: [info@atlanticyachtandship.ru](mailto:info@atlanticyachtandship.ru)

Web: [www.atlanticyachtandship.ru/en/](http://www.atlanticyachtandship.ru/en/)

## Telephones

---

USA: +1 954 274-4435

RUS: +7 495 766-6268

## Office hours

---

Monday – Saturday: **9:00 - 21:00** EDT

Sunday: **closed**

## Address

---



Harbour Towne Marina, 850 NE 3rd St,  
STE 213, Dania, FL 33004