



42' SEALINE "SKY GODDESS" — SEALINE



Builder: SEALINE

Year Built: 1995

Model: Cruiser

Price: 230 000 € EUR Off the market

Location: Germany

LOA: 42' 0" (12.80m)

Beam: 14' 0" (4.27m)

Cruise Speed: 23 Kts. (26 MPH)

Max Speed: 27 Kts. (31 MPH)

Our experienced yacht broker, Andrey Shestakov, will help you choose and buy a yacht that best suits your needs 42' Sealine "Sky Goddess" — SEALINE from our catalogue. Presently, at Atlantic Yacht and Ship Inc., we have a wide variety of yachts available on our sale's list. We also work in close contact with all the big yacht manufacturers from all over the world.

If you would like to buy a yacht 42' Sealine "Sky Goddess" — SEALINE or would like help answering any questions concerning purchasing, selling or chartering a yacht, please call +1 954 274-4435

TABLE OF CONTENTS

TABLE OF CONTENTS	2
SPECIFICATIONS	4
Basic Information	4
Dimensions	4
Speed, Capacities and Weight	4
Accommodations	4
Hull and Deck Information	4
Engine Information	5
DETAILED INFORMATION	6
Accommodations	6
Galley	6
Technical Equipment	6
Deck Equipment	7
Flybridge	7
Cockpit	7
Lower Helm	7
Forward Cabin	8
Mid cabin	8
Ensuite Toilet / Shower to Mid Cabin	8
Ensuite Toilet / Shower to Forward Cabin	8
Engine Room	9
Exclusions	9
Disclaimer	9
PHOTOS	10
CONTACTS	14
Contact details	14
Telephones	14

Office hours	14
Address	14

SPECIFICATIONS

Basic Information

Category: Cruiser

Sub Category: Cabin Cruiser

Model Year: 1995

Year Built: 1995

Country: Germany

Dimensions

LOA: 42' 0" (12.80m)

Beam: 14' 0" (4.27m)

Clearance: 15' 0" (4.57m)

MFG Length: 42' 0" (12.80m)

Speed, Capacities and Weight

Cruise Speed: 23 Kts. (26 MPH)

Max Speed: 27 Kts. (31 MPH)

Displacement: 26400 Pounds

Water Capacity: 120 Gallons

Fuel Capacity: 350 Gallons

Accommodations

Total Cabins: 2

Total Berths: 2

Sleeps: 4

Total Heads: 1

Hull and Deck Information

Hull Material: Fiberglass

Hull Color: white

Engine Information

Engines: 2

Manufacturer: Volvo Penta

DETAILED INFORMATION

Accommodations

Master Stateroom Guest Cabin Salon

- Surround Sound Theater Entertainment System w/Stereo VCR & Active Sub-woofer System in Custom Cabinet Located in Salon.
- Ice Maker
- Salon Fully Lined Throughou
- Carpet & Curtains Fully Upholstered "U" Shaped Seating with Storage Under
- Adjustable Table
- Pull Out Seat with Storage Under Storage Cupboards with Salon Fridge Floor Hatches for Access to Engine Room
- Electrical Control Panel for 220/240 Volts Circuit
- Teak & Holly Interior
- Additional Sound Insulating Under Salon Floor
- Electrical Control Panel for 12- Volts DC Circuit
- Overhead Lighting
220v/240v Sockets
Opening Windows

Galley

- Pantry
- Sink
- Refrigerator
- Ceran stove
- Microwave with grill
- Overhead storage lockers
- Storage cupboards
- Opening window
- Overhead lighting
- Mixer tap with pressurized hot and cold water

Technical Equipment

- Anchor
- Anchor windlass
- Battery charger
- Bilge Pump (electric)
- Bilge pump (mechanic)
- Windshield wipers
- Rudder indicator
- Navigation lights
- Horn
- Bow Thruster

Deck Equipment

- Integral Bathing Platform with Storage Locker & Fender Storage
- Stainless Steel Ladder
- Water Hot & Cold Transom Shower
- Cockpit Access Door in Transom
- Aluminium Fendering with Rubber Insert
- Self-Draining Cockpit
- Stainless Steel Ensign Socket & Staff
- Moulded Non-Slip Deck
- Sealine Concealed Anchor Stowage System
- Six Deck Cleats
- Full Length Stainless Steel Pulpit with Guard Rail
- Large Self-Draining Chain Locker with Fender Storage
- Opening Forward Hatch
- Aluminum Framed Toughened Glass Curved Windscreen with Side Windows Full Set of Navigation Lights

Flybridge

- 12-Volt Sockets
- 12-Volt Flybridge Stereo w/CD Player
- Large Double Helm Seat
- "L" Shaped Seating for 5/6 People
- Large Sunbed
- Stainless Steel Handrails
- Adjustable Tilt Steering Wheel on Flybridge
- Flybridge Tonneau Cover Helm with Engine Controls
- Engine Instrumentation
- Tinted Curved Windscreen
- Fiberglass Radar Mast

Cockpit

- 12-Volt Sockets
- Large Full width Seating Area Cockpit Table
- Curved Toughened Glass Sliding Door to Salon
- Integral Molded Stairway to Flybridge
- Exterior Speakers for Cockpit with Switch
- Full Cockpit Canopy with Easy Storage System
- Large Cockpit Lazarette with Teak Treads

Lower Helm

- Double Fully Upholstered Helm Seat Helm with Engine Controls
- Console with Provision for Navigational Equipment
- Full Engine Instrumentation

Forward Cabin

- Fully Lined Throughout Carpet & Curtains
- Large Fully Upholstered Double Berths with Storage below
- Hanging Wardrobes with Shelves Vanity Unit with Mirror
- Storage Drawers
- Storage Cupboards
- High Level Storage Shelf & Cupboards
- 220/240v Sockets
- Opening Windows
- Opening Hatch to Deck
- Mirror on Forward Bulkhead

Mid cabin

- Fully Lined Throughout
- Carpet & Curtains
- Fully Upholstered Single Berth with Infill to Make Double
- Hanging Wardrobe
- Storage Shelf
- Opening Window

Ensuite Toilet / Shower to Mid Cabin

- Toilet/Shower Compartment
- Sea Toilet
- Hand Basin
- Mixer Tap with Hot & Cold Pressurized Water
- Vanity Units with Door Shelf & Mirror
- Shaver Socket
- Toilet Roll Holder
- Towel Holders
- Hot & Cold Shower
- Shower Drain with Automatic Pump Opening Hatch to Deck

Ensuite Toilet / Shower to Forward Cabin

- Custom fabric
- Custom curtains
- Hot and cold shower

Shower drain with automatic pump Opening window

Engine Room

- 2x Volvo Penta 72 TAMD
- Engine Batteries for Emergency Starting
- Engine Room Fans
- Automatic Bilge Pumps
- Manual Bilge Pump
- Four Automatic Fire Extinguishers Two Fuel Filters
- Engine Room Light
- Full Engine Room
- Sound Proofing
- Trim tabs elect/hydr.
- Generator 6 Kw, 260 hrs.

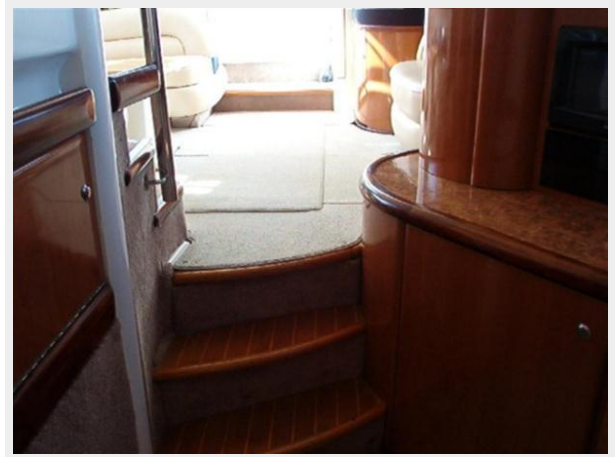
Exclusions

Owner's personal belongings. Owner's personal toys, including but not limited Jet-skis, Tenders, Sea Bobs, Fishing & Diving equipment.

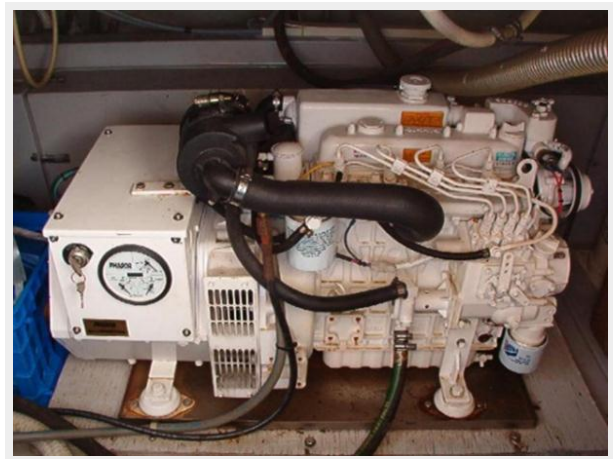
Disclaimer

The Company offers the details of this vessel or yacht in good faith but cannot guarantee or warrant the accuracy of this information nor warrant the condition of the vessel. A buyer should instruct his representatives, agents, or his surveyors, to investigate such details as the buyer desires validated. This vessel or yacht is offered subject to prior sale, price change, or withdrawal without notice.

PHOTOS









CONTACTS

Andrey Shestakov, leading yacht broker of the sales department of Atlantic Yacht and Ship Inc. Atlantic Yacht and Ship Inc., the official representative of the Miami/Fort Lauderdale FL headquarters.

Contact details

Email: info@atlanticyachtandship.ru

Web: www.atlanticyachtandship.ru/en/

Telephones

USA: +1 954 274-4435

RUS: +7 495 766-6268

Office hours

Monday – Saturday: **9:00 - 21:00** EDT

Sunday: **closed**

Address



Harbour Towne Marina, 850 NE 3rd St,
STE 213, Dania, FL 33004